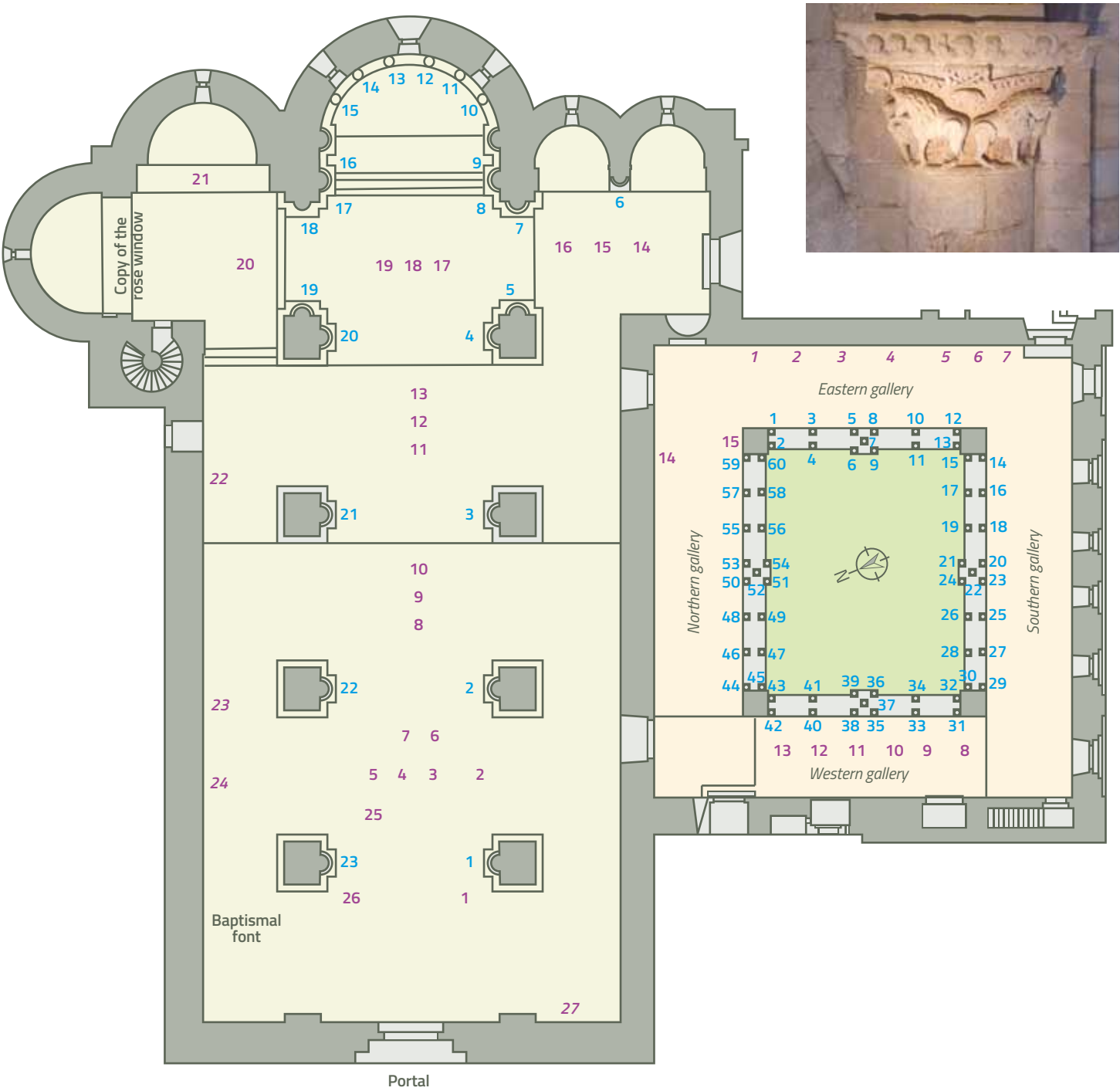


- 16** - Confronted birds in the corners.  
**17** - Three human figures with arms linked and plant elements. On the cyma, birds.  
**18** - Confronted lions and plant elements. On the sides, lions ridden and held by men. On the cyma, Christ in an attitude of blessing, accompanied by apostles and the symbols of the Evangelists.  
**19** - Human figures holding two lions in the corners.  
**20** - Plain leaves, with heads.  
**21** - Three human figures holding plant elements and animals.  
**22** - Two pairs of lions crouching and confronted, distributed on two levels.  
**23** - Incised acanthus leaves, with pineapples and a head.

[Adapted from P. Beseran, in *Catalunya Romànica*, Vol. 5, P. 156-160 and V. Caner, *L'església del monestir de Sant Pere de Galligants. Primera aproximació a l'edifici*, pp. 38-73].

NOTEWORTHY TOMBSTONES AND SARCOPHAGI IN THE CHURCH

- 1** - Tombstone of an abbot (16th century)  
**2** - Tombstone of Joan Rovira, priest and advowee (1751)  
**3** - Tombstone of Margarida Gadilla, maiden (1755)  
**4** - Tombstone of Carles Andreu, tanner (1590)  
**5** - Tombstone of Miquel Espita-, tanner (1541)  
**6** - Tombstone of the Mora family (1706)  
**7** - Tombstone of Baudília Solivera (1620)  
**8** - Tombstone of Antoni Mont, tanner (164-)  
**9** - Tombstone of Juli Torrent and Jaume Torrent i Vilert, tanners (1643)  
**10** - Tombstone of Josep Cortils, baker (1729)  
**11** - Tombstone of Fray Antoni de Grimau, abbot (1790)  
**12** - Tombstone of Fray Manuel de Mir i Cadena, abbot (1735)  
**13** - Tombstone of Fray Jeroni de Mora, abbot (1706)  
**14** - Tombstone of Narcís Coderch, priest (1740)  
**15** - Tombstone of Jaume Buxó, master house builder (1705)  
**16** - Tombstone of Joan Sunyer, retailer (17<sup>th</sup> century ?)  
**17** - Tombstone of Fray Esteve Salacruz, abbot, president of the Generalitat de Catalunya (1634)  
**18** - Tombstone of Fray Pere Ravell, monk and verger (1635)  
**19** - Tombstone of Fray Josep Codina, abbot (1619)  
**20** - Common grave of the abbots of the monastery (17<sup>th</sup> century)  
**21** - Tombstone of Miquel Ros, wool carder (1631)  
**22** - Sarcophagus of Berenguer de Sant Celoni and his wife Blanca (1370). Provenance: unknown  
**23** - Sarcophagus of Sibil·la, wife of G. de Boxols (1314). Provenance: Sant Francesc Monastery (Girona, Gironès)  
**24** - Sarcophagus of Arnau de Montanyans (1321). Provenance: Sant Francesc Monastery (Girona, Gironès)  
**25** - Tombstone of Felicià Torrent, tanner (1628)  
**26** - Tombstone of Francesc Estanda (?), wool carder (1648)  
**27** - Sarcophagus of Ramon de Taialà, judge of the Cort reial and rebuilder of the Arab Baths (1307). Provenance: Can Truè, Calabuig (Bàscara, Alt Empordà)



THE CAPITALS OF THE SANT PERE DE GALLIGANTS CLOISTER

EASTERN GALLERY:

- 1** - Lion's heads and claws between plant elements.  
**2** - Destroyed.  
**3** - Plant elements and heads on the dados.  
**4** - Two levels of striated acanthus leaves.  
**5** - Bearded busts on a level of leaves.  
**6** - Corinthian order plant elements.  
**7** - Corinthian order plain leaves.  
**8** - Four standing birds with open wings.  
**9** - Two levels of plain leaves with palm-shaped ends.  
**10** - Two levels of striated leaves.  
**11** - Corinthian order plant elements, with a pineapple below the dado.  
**12** - Mermaid-birds with outstretched wings and a bearded head.  
**13** - Plant elements and pineapples.

SOUTHERN GALLERY:

- 14** - Confronted rampant lions, with common heads, looking behind.  
**15** - Two levels of plain leaves with striated interiors.  
**16** - Striated acanthus leaves.  
**17** - Three levels of plain leaves with pineapples below.  
**18** - Human figures linked with stems, on a level of leaves.  
**19** - Two levels of stylised plant elements.  
**20** - Corinthian order acanthus leaves.  
**21** - Striated ornamental bows on a dotted background.  
**22** - Two levels of plain leaves with striated fruit.  
**23** - Four standing birds with open wings.  
**24** - Two levels of plain leaves, with embryonic stems and pineapples below the dados.  
**25** - Ornamental bows of plant elements.  
**26** - Three levels of leaves.  
**27** - Four pairs of lions with common heads ejecting stems with palm-shaped ends upwards.  
**28** - Crisscrossed ribbons on a level of leaves.  
**29** - Confronted lions with the head turned back.  
**30** - Confronted lions with the head turned back.



WESTERN GALLERY:

- 31** - Confronted lions with the head turned back.  
**32** - Three levels of palmettes linked by the base.  
**33** - Lions, confronted and embraced at the waist, with common heads, and animal heads and a rosette on the dados.  
**34** - Three levels of acanthus leaves, and human and animal heads on the dados.  
**35** - A bishop officiating, two musicians and a dancer, interspersed with four dancers with their heads down.  
**36** - Striated ornamental bows on a bed of stalks.  
**37** - Three levels of leaves. Possibly a Gothic-period addition.  
**38** - Annunciation, Birth and Epiphany. Order with corner towers.  
**39** - Twin-tailed mermaid-fish.  
**40** - Flight into Egypt and Herod ordering the Massacre of the Innocents. (?)  
**41** - Three levels of acanthus leaves and human and animal heads on the dados.  
**42** - Confronted griffins with common heads. A male head on the central dado.  
**43** - Two levels of plain leaves with striated interior.

NORTHERN GALLERY:

- 44** - Confronted lions and lionesses, with common heads.  
**45** - Two levels of plain leaves with striated interior.  
**46** - Four standing human figures, linked by stalks ending in animal heads vomiting leaves.  
**47** - Striated leaves on a level of plain leaves.  
**48** - Corinthian order acanthus leaves.  
**49** - Corinthian order acanthus leaves.  
**50** - Four standing human figures linked by stalk heads.  
**51** - Two levels of plain leaves with palm-shaped end.  
**52** - Three levels of plain leaves with prominent nerves. Spiral-shaped upper ends.  
**53** - Group of persons standing, probably an abbot with a crosier and diverse monks.  
**54** - Three levels of plain leaves with prominent nerves. Spiral-shaped upper ends.  
**55** - Corinthian order acanthus leaves.  
**56** - Stylised plant elements.  
**57** - Plant elements, ribbons, palms and a monstrous head.  
**58** - Stylised Corinthian order plant elements.  
**59** - Confronted lions with a common head.  
**60** - Corinthian order plant elements.

[Adapted from P. Beseran, in *Catalunya Romànica*, Vol. 5, pp. 164]





TOMBSTONES AND SARCOPHAGI IN THE CLOISTER:

- 1 - Sarcophagus of Guillem Alemany de Bellpuig, his mother Agnès and his wife Blanca (1397). Provenance: Sant Francesc Monastery (Girona, Gironès)
- 2 - Sarcophagus of Blanca, wife of Simó de Gironella (13<sup>th</sup> century ?). Provenance: Sant Francesc Monastery (Girona, Gironès)
- 3 - Sarcophagus of Francesca, wife of Jaume de Monells (1336). Provenance: Sant Francesc Monastery (Girona, Gironès)
- 4 - Sarcophagus of Margarida, wife of Ramon de Cabanelles (1319). Provenance: Sant Francesc Monastery (Girona, Gironès)
- 5 - Sarcophagus of Gerdal, wife of Arnau de Ribera, Guilleuma, his daughter, and Gerdal, wife of Ramon d’Espasens (13<sup>th</sup> century ?). Provenance: Sant Francesc Monastery (Girona, Gironès)
- 6 - Sarcophagus of Berenguera Estruc, mother of Jaume de Monells, Caterina, his first wife, and his children, Nicolau and Jaume (1377). Provenance: Sant Francesc Monastery (Girona, Gironès)
- 7 - Sarcophagus of Sibil·la, daughter of Guillem de Creixell (13<sup>th</sup> century ?). Provenance: Sant Francesc Monastery (Girona, Gironès)
- 8 - Tombstone of an abbess from the Sant Celoni family (?) (16<sup>th</sup> century ?). Provenance: Les Bernardes Convent (Girona, Gironès)
- 9 - Tombstone of the nuns Isabel de Farners (16<sup>th</sup>-17<sup>th</sup> century), Dionísia de Farners, (1615) and Isabel de Vilanova (17<sup>th</sup> century). Provenance: Les Bernardes Convent (Girona, Gironès)
- 10 - Tombstone of Miquel [...], tanner (1543 ?). Provenance: possibly from the steps opposite the door of Sant Pere de Galligants
- 11 - Tombstone of the nuns Jerònima de Sant Celoni (1616) and Emerenciana de Sant Celoni (1624). Provenance: Les Bernardes Convent (Girona, Gironès)
- 12 - Tombstone with illegible name (18<sup>th</sup> century ?). Provenance: Unknown
- 13 - Tombstone of Isidre [...]rner, acolyte (1767). Provenance: Unknown
- 14 - Tombstone of Abbot Bernat Aguiló (1273).
- 15 - Tombstone of Abbot Rotland (ca. 1166).



Baptismal font

Twelve-sided limestone font dated 1550, donated by the tanners guild, one of the most important guilds in the borough of Sant Pere. On it you can see two coats of arms, one representing Saint Peter and the other the guild that made the donation.



Portal

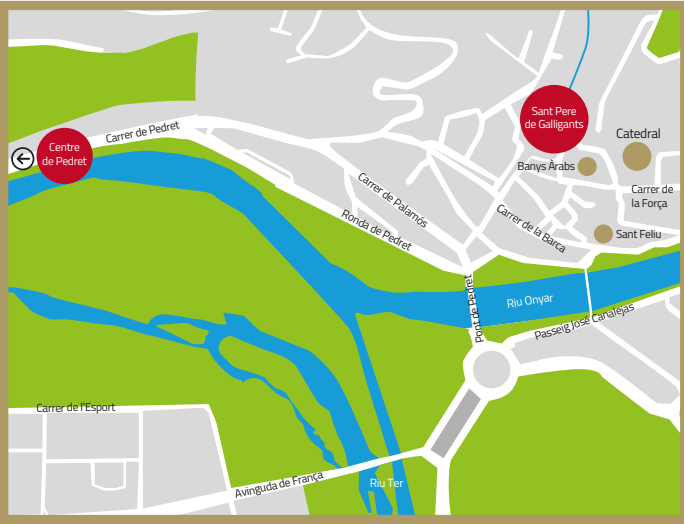
Dated to the 12<sup>th</sup> century, this portal is made up of five archivolts that rest on two columns alternated with three pillars. Its capitals present a rich combination of plant, animal, fantastic animal and human motifs.



Rose window

The monastery has a richly decorated rose window that presides over the main façade. A life-size reproduction of it can be seen in one of the apsidioles of the nave.

DL: B 2243-2022



MUSEU D'ARQUEOLOGIA DE CATALUNYA - GIRONA

Monestir de Sant Pere de Galligants  
C/ Santa Llúcia, 8, 17007 Girona.  
Tel: 972 20 26 32  
macgironagalligants.cultura@gencat.cat

Centre de Pedret  
C/ Pedret 95, 17007 Girona.  
Tel: 972 20 46 37  
macgirona.cultura@gencat.cat

Opening times:

1/5 - 30/9 10 am - 7 pm  
1/10 - 30/4 10 am - 6 pm  
Sundays and holidays 10 am - 2 pm  
Closed Mondays (including public holidays),  
25 and 26 December and 1 and 6 January

Bookings:

Tel: 972 20 46 37  
macgirona.cultura@gencat.cat  
www.macgirona.cat

Branches:

BARCELONA, EMPÚRIES, GIRONA, OLÈRDOLA,  
ULLASTRET

Social media:



mac.cat

MACGirona

Sant Pere de Galligants

Exceptional features



EN

Sant Pere de Galligants monastery, today home to the Archaeological Museum of Catalonia-Girona, is also one of the most notable examples of Catalan Romanesque architecture. It was founded in the 10<sup>th</sup> century and today we can see the church and the cloister built in the 12<sup>th</sup> century. The church has a basilica floor plan and several notable elements, including the central apse that presides imposingly over the interior and splendid sculpted capitals.

The rectangular-shaped cloister is noteworthy for the groups of five columns that replace the traditional central pillars in each gallery, endowing it with remarkable architectural lightness. The space is visually enhanced by sixty capitals that are richly-decorated with various themes.



THE CAPITALS OF SANT PERE DE GALLIGANTS CHURCH

- 1 - Incised acanthus leaves, with bird heads.
- 2 - Plain acanthus leaves, with stalks and a head.
- 3 - Two pairs of lions crouching and confronted. Plant elements and a head.
- 4 - Plain leaves, with heads.
- 5 - Two pairs of lions crouching and confronted.
- 6 - Martyrdom of Saint Paul [attributed to the circle of the Master of Cabestany].
- 7 - Mermaid-fish with a fish in each hand between four Sagittarius centaurs (with bows).
- 8 - Vocation of the Apostles [attributed to the circle of the Master of Cabestany].
- 9 - Plant elements and a feline head.
- 10 - Destroyed.
- 11 - Plant elements combined with zoomorphic elements (birds) and humans.
- 12 - Cain and Abel.
- 13 - Saint Peter and the Mission of the Apostles. (?)
- 14 - Plant elements.
- 15 - Destroyed.

